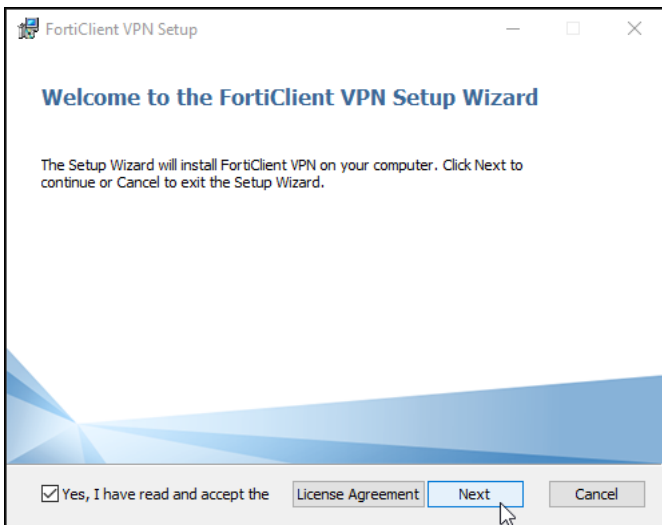
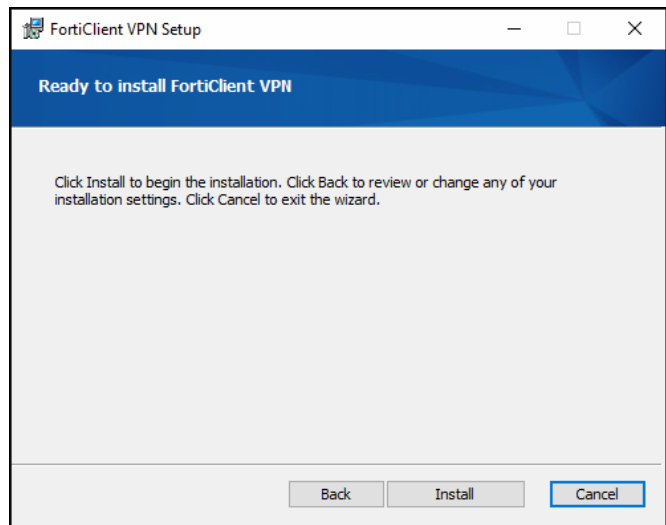


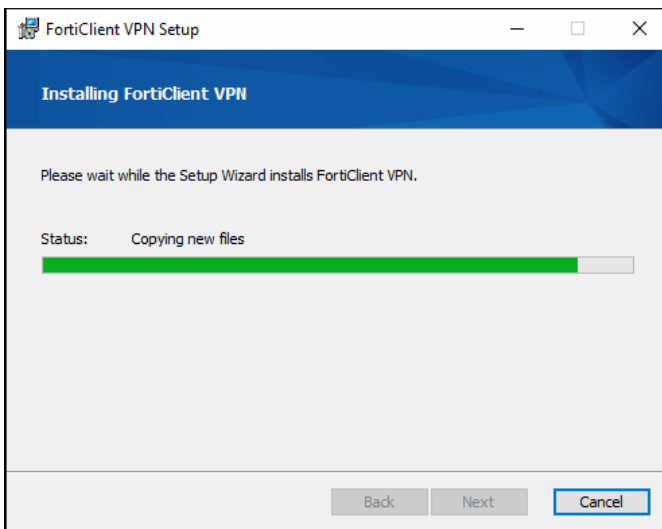
When you have downloaded the FortiClient VPN Software please run the Installer ...



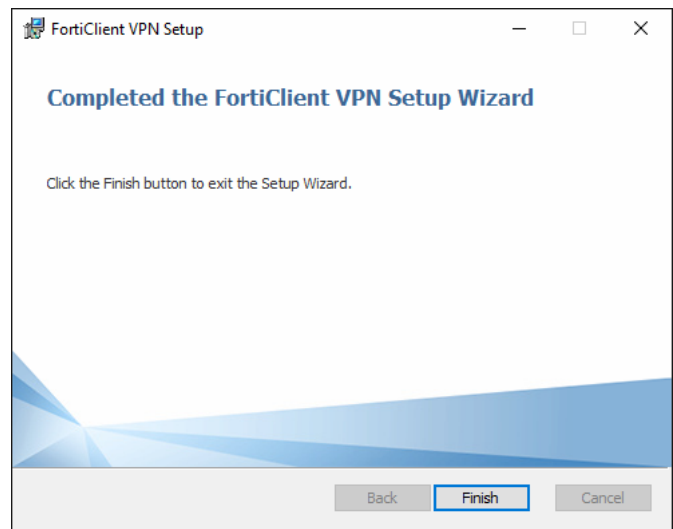
Click "Next"



Click "Install"

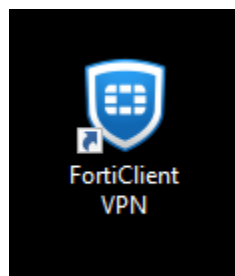


...installation takes some time ...

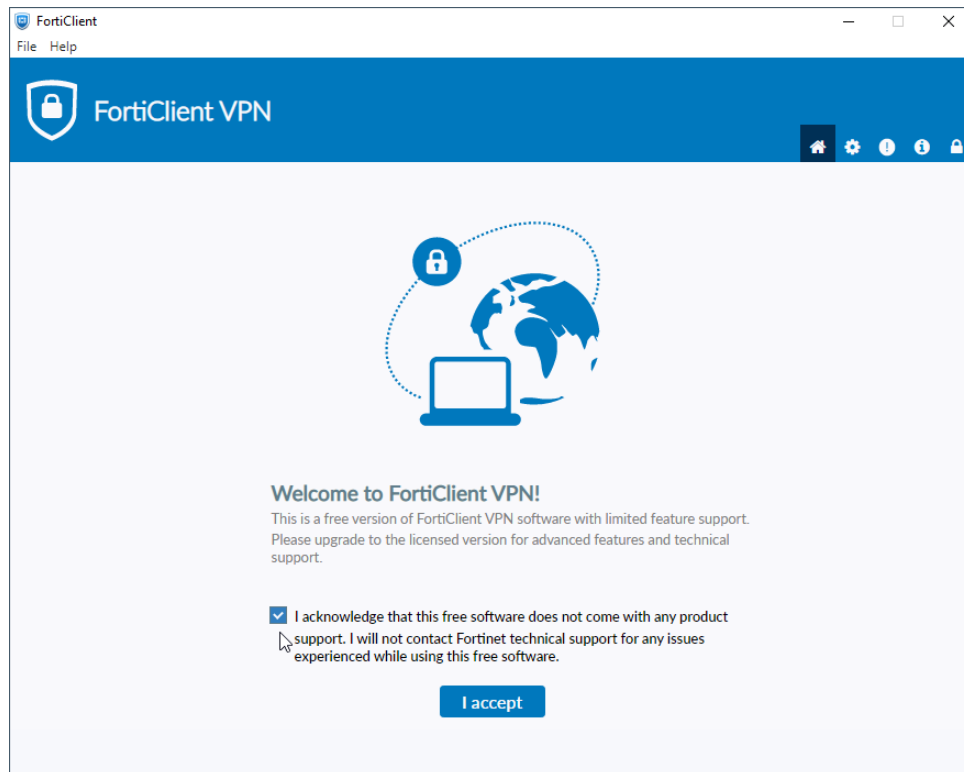


Click "Finish"

This will be the icon to launch the program

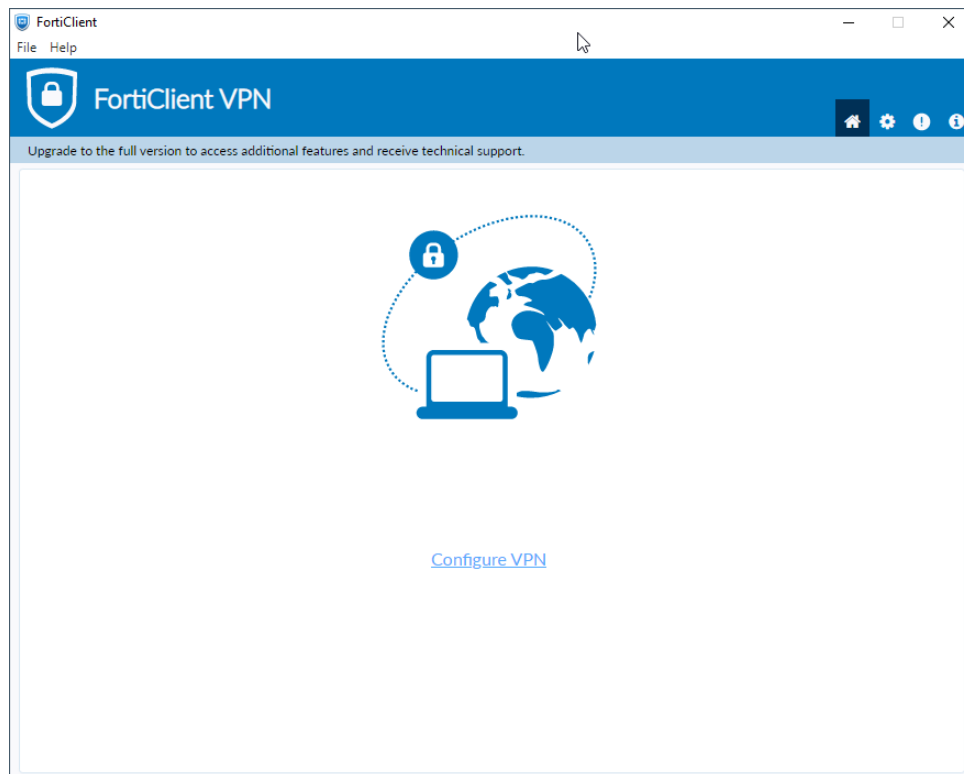


When you open the program for the first time you will see this:



You have to checkmark and click “I accept”

Now you see the HOME screen



Click on “Configure VPN”

New VPN Connection

VPN

SSL-VPN
IPsec VPN
XML

Connection Name

Description

Remote Gateway

+Add Remote Gateway

☐ Customize port

443

☐ Enable Single Sign On (SSO) for VPN Tunnel

Client Certificate

None

Authentication

☒ Prompt on login
☐ Save login

☐ Enable Dual-stack IPv4/IPv6 address

Cancel

Save

New VPN Connection

VPN

SSL-VPN
IPsec VPN
XML

Connection Name

Nutrex HQ

Description

Remote Gateway

remote.nutrex.com

+Add Remote Gateway

☒ Customize port

10443

☐ Enable Single Sign On (SSO) for VPN Tunnel

Client Certificate

None

Authentication

☒ Prompt on login
☐ Save login

☐ Enable Dual-stack IPv4/IPv6 address

Cancel

Save

Fill it like this and click “Save”

FortiClient
File Help

FortiClient VPN

Upgrade to the full version to access additional features and receive technical support.

VPN Name

Nutrex HQ

Username

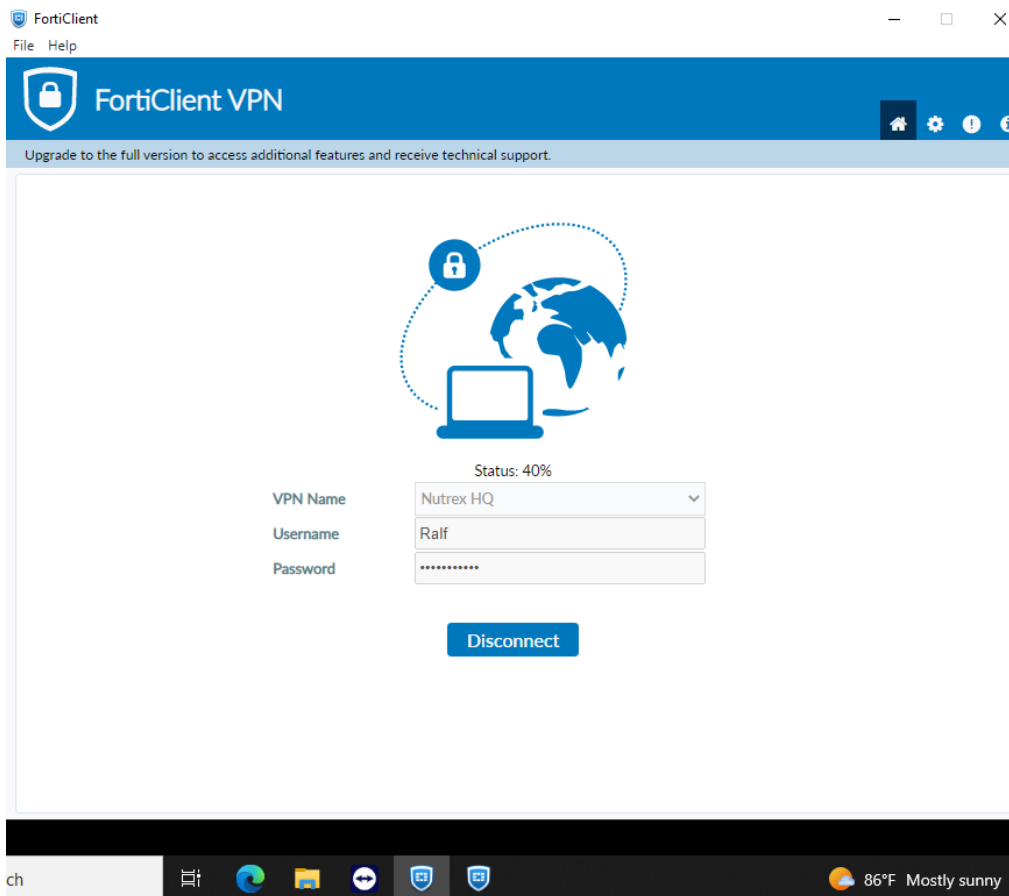
Password

Connect

Now you type in you username - exactly like given (case sensitive)

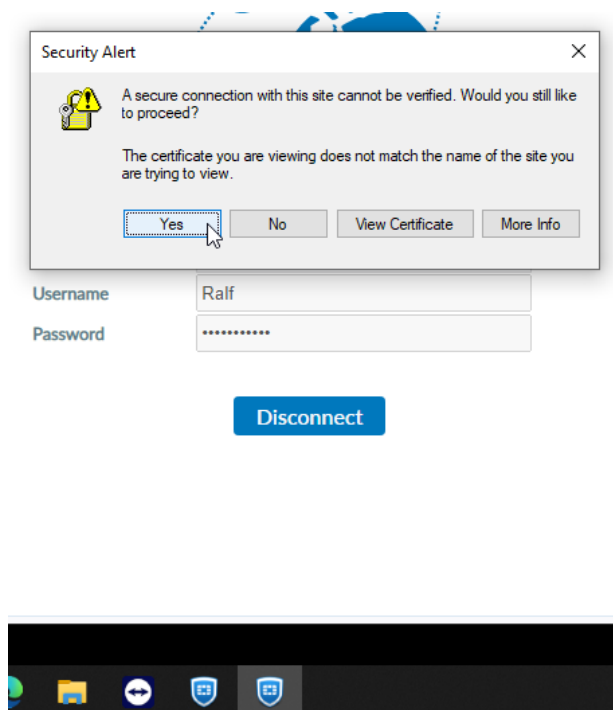
And your windows password (login to your computer)

And click on “Connect”



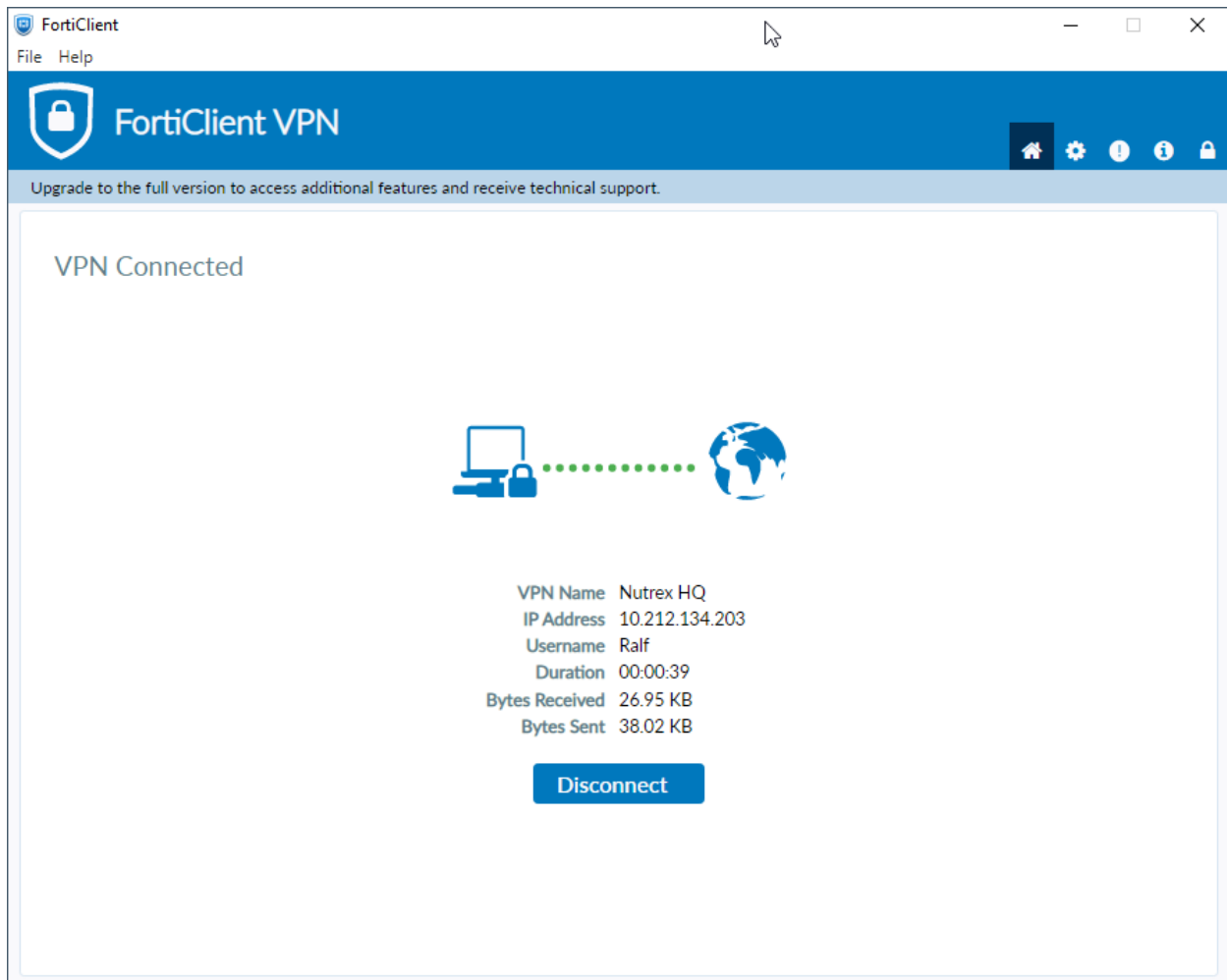
The status bar will go up and may stop at 40%

You may be seeing a second **FortiClient** icon in the task bar – click on it ...



Click on “Yes”

If you see this



You are connected to Nutrex HQ with the FortiClient VPN

You can "Disconnect" from here when you are finished.

You will also see in the right corner of your task bar this icon



The blue shield – The yellow lock indicates that you are connected!

You can disconnect with a right mouse click on that icon!

